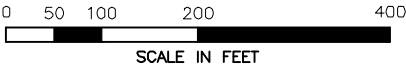


LEGEND

- — — — — FERC 03-07-14 PROPOSED 30" CONSTITUTION PIPELINE
- - - - - FERC 03-07-14 EDGE OF WORK CORRIDOR
- — — — — PROPOSED DEVIATION CONSTITUTION 30" PIPELINE
- - - - - PROPOSED WORKSPACE DEVIATION/EDGE OF WORK CORRIDOR
- P — — — — — PROPERTY LINE
- P — — — — — POWER LINE
- || — — — — — FOREIGN PIPELINE



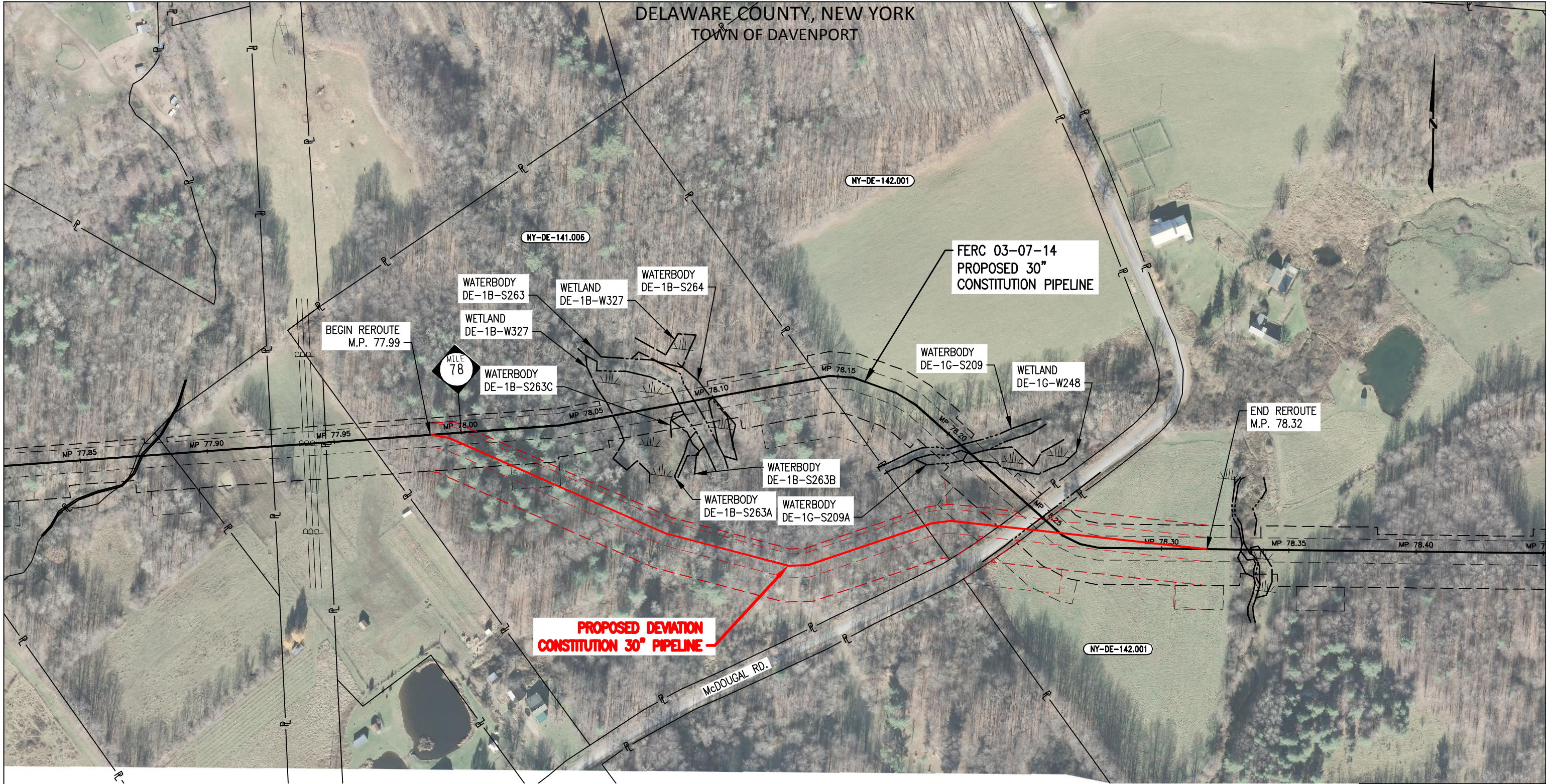
DRAWING NO.				REFERENCE TITLE			
26-03-70/0077 26-03-70/0078				ALIGNMENT SHEET SHT 077 OF 126 ALIGNMENT SHEET SHT 078 OF 126			
NO.	DATE	BY	REVISION DESCRIPTION	W.O. NO.	CHK.	APP.	
1	06/02/14	GIE	ISSUED FOR REVIEW	1110415	GIE	BD	

CONSTITUTION PIPELINE COMPANY, LLC.
ROUTE DEVIATION PLAN
RE-ROUTE TRACKING NUMBER TRK#488.0

TOWN OF DAVENPORT
DELAWARE COUNTY, NEW YORK

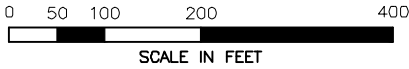
CONSTITUTION PIPELINE

DRAWN BY: GIE	DATE: 06/02/14	ISSUED FOR BID:	SCALE: 1"= 200'
CHECKED BY: GIE	DATE: 06/02/14	ISSUED FOR CONSTRUCTION:	
APPROVED BY:	DATE:	DRAWING NUMBER: 26-03-70/077.1	SHEET 1
WO: 1110415			OF 1



LEGEND



- FERC 03-07-14 PROPOSED 30" CONSTITUTION PIPELINE
- - - FERC 03-07-14 EDGE OF WORK CORRIDOR
- PROPOSED DEVIATION CONSTITUTION 30" PIPELINE
- - - PROPOSED WORKSPACE DEVIATION/EDGE OF WORK CORRIDOR
- P — PROPERTY LINE
- P — POWER LINE
- || — FOREIGN PIPELINE



DRAWING NO.				REFERENCE TITLE			
26-03-70/0080				ALIGNMENT SHEET SHT 080 OF 126			
NO.	DATE	BY	REVISION DESCRIPTION	W.O. NO.	CHK.	APP.	
1	06/02/14	GIE	ISSUED FOR REVIEW	1110415	GIE	BD	

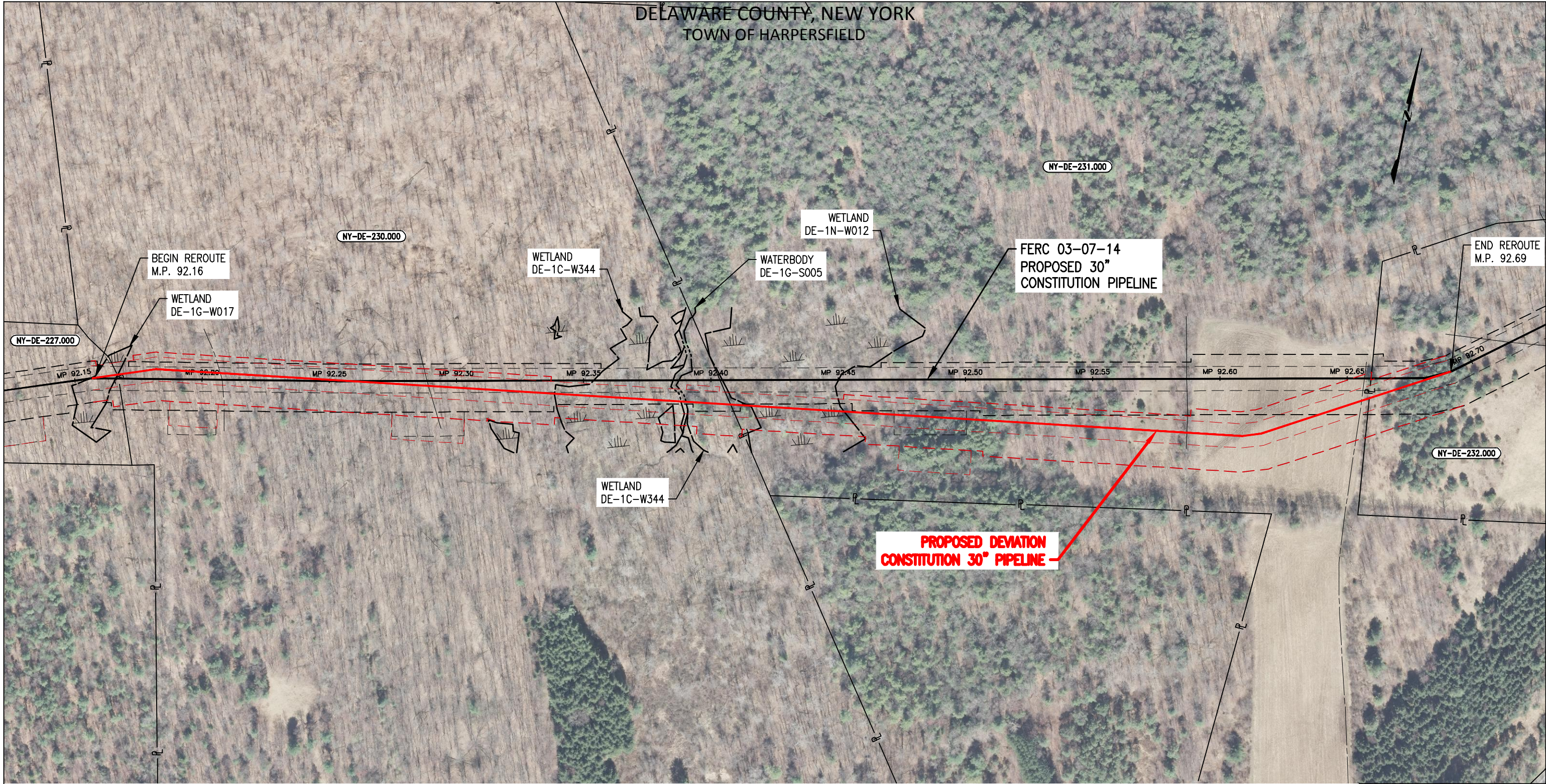
CONSTITUTION PIPELINE COMPANY, LLC.
ROUTE DEVIATION PLAN
RE-ROUTE TRACKING NUMBER TRK#502.0

TOWN OF DAVENPORT
DELAWARE COUNTY, NEW YORK



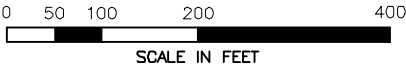
CONSTITUTION PIPELINE

DRAWN BY: GIE	DATE: 06/02/14	ISSUED FOR BID:	SCALE: 1"= 200'
CHECKED BY: GIE	DATE: 06/02/14	ISSUED FOR CONSTRUCTION:	
APPROVED BY:	DATE:	DRAWING NUMBER: 26-03-70/080.1	SHEET 1
WO: 1110415			OF 1



LEGEND

- FERC 03-07-14 PROPOSED 30" CONSTITUTION PIPELINE
- - - FERC 03-07-14 EDGE OF WORK CORRIDOR
- PROPOSED DEVIATION CONSTITUTION 30" PIPELINE
- - - PROPOSED WORKSPACE DEVIATION/EDGE OF WORK CORRIDOR
- P — PROPERTY LINE
- P — POWER LINE
- || — FOREIGN PIPELINE



DRAWING NO.				REFERENCE TITLE			
26-03-70/0094				ALIGNMENT SHEET SHT 094 OF 128			
NO.	DATE	BY	REVISION DESCRIPTION	W.O. NO.	CHK.	APP.	
1	06/02/14	GIE	ISSUED FOR REVIEW	1110415	GIE	BD	

CONSTITUTION PIPELINE COMPANY, LLC.
ROUTE DEVIATION PLAN
RE-ROUTE TRACKING NUMBER TRK#493.0

TOWN OF HARPERSFIELD
DELAWARE COUNTY, NEW YORK

CONSTITUTION PIPELINE

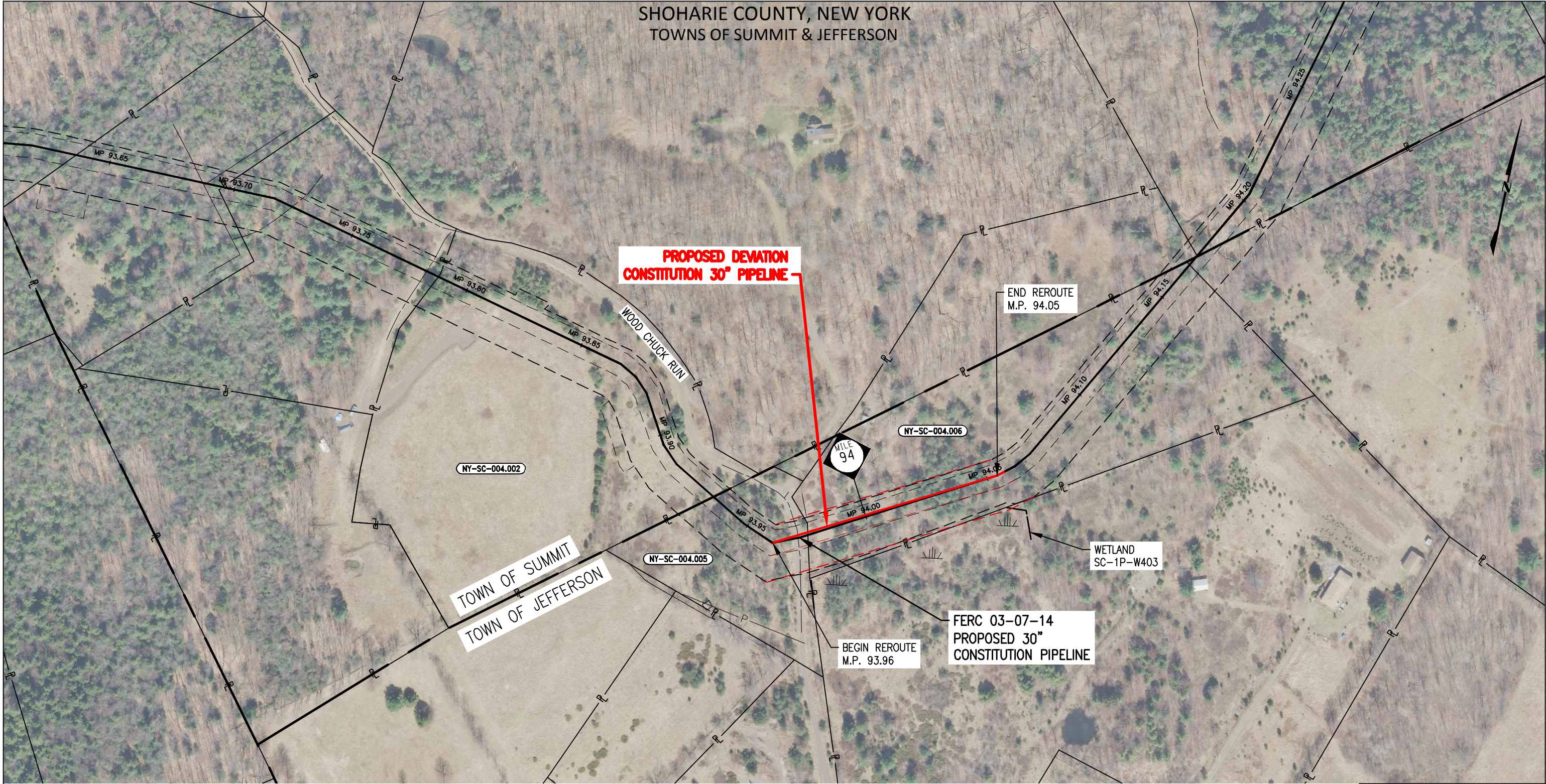
DRAWN BY: GIE
CHECKED BY: GIE
APPROVED BY:

DATE: 06/02/14
DATE: 06/02/14
DATE:

ISSUED FOR BID:
ISSUED FOR CONSTRUCTION:
DRAWING NUMBER: 26-03-70/094.1

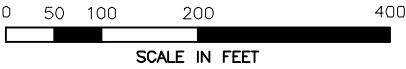
SCALE: 1"= 200'
SHEET 1 OF 1

SHOHARIE COUNTY, NEW YORK
TOWNS OF SUMMIT & JEFFERSON



LEGEND

- — — FERC 03-07-14 PROPOSED 30" CONSTITUTION PIPELINE
- - - - FERC 03-07-14 EDGE OF WORK CORRIDOR
- — — PROPOSED DEVIATION CONSTITUTION 30" PIPELINE
- - - - PROPOSED WORKSPACE DEVIATION/EDGE OF WORK CORRIDOR
- P — PROPERTY LINE
- P — POWER LINE
- || — FOREIGN PIPELINE



DRAWING NO.				REFERENCE TITLE			
26-03-70/0096				ALIGNMENT SHEET SHT 096 OF 126			
NO.	DATE	BY	REVISION DESCRIPTION	W.O. NO.	CHK.	APP.	
1	06/02/14	GIE	ISSUED FOR REVIEW	1110415	GIE	BD	

GULF INTERSTATE
ENGINEERING

HOUSTON, TEXAS

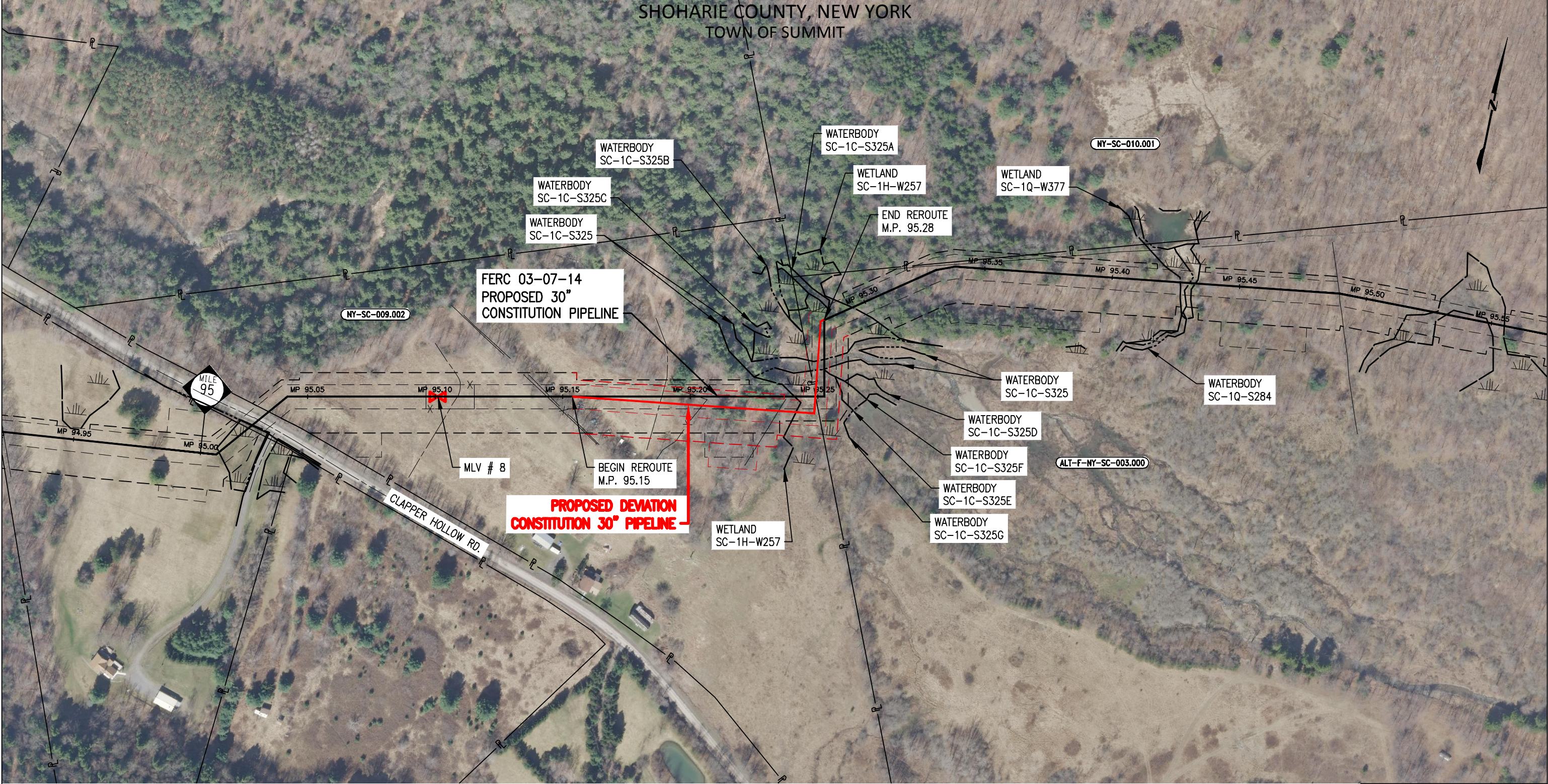
CONSTITUTION PIPELINE

CONSTITUTION PIPELINE COMPANY, LLC.
ROUTE DEVIATION PLAN
RE-ROUTE TRACKING NUMBER ENG-TRK#019

TOWNS OF SUMMIT & JEFFERSON
SHOHARIE COUNTY, NEW YORK

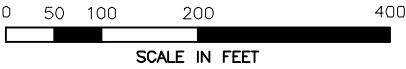
DRAWN BY: GIE	DATE: 06/02/14	ISSUED FOR BID:	SCALE: 1"= 200'
CHECKED BY: GIE	DATE: 06/02/14	ISSUED FOR CONSTRUCTION:	
APPROVED BY:	DATE:	DRAWING NUMBER: 26-03-70/096.1	SHEET 1
WO: 1110415			OF 1

SHOHARIE COUNTY, NEW YORK
TOWN OF SUMMIT



LEGEND


- FERC 03-07-14 PROPOSED 30" CONSTITUTION PIPELINE
- - - FERC 03-07-14 EDGE OF WORK CORRIDOR
- PROPOSED DEVIATION CONSTITUTION 30" PIPELINE
- - - PROPOSED WORKSPACE DEVIATION/EDGE OF WORK CORRIDOR
- P — PROPERTY LINE
- P — POWER LINE
- || — FOREIGN PIPELINE



DRAWING NO.		REFERENCE TITLE					
26-03-70/0097		ALIGNMENT SHEET SHT 097 OF 126					
NO.	DATE	BY	REVISION DESCRIPTION	W.O. NO.	CHK.	APP.	
1	06/02/14	GIE	ISSUED FOR REVIEW	1110415	GIE	BD	

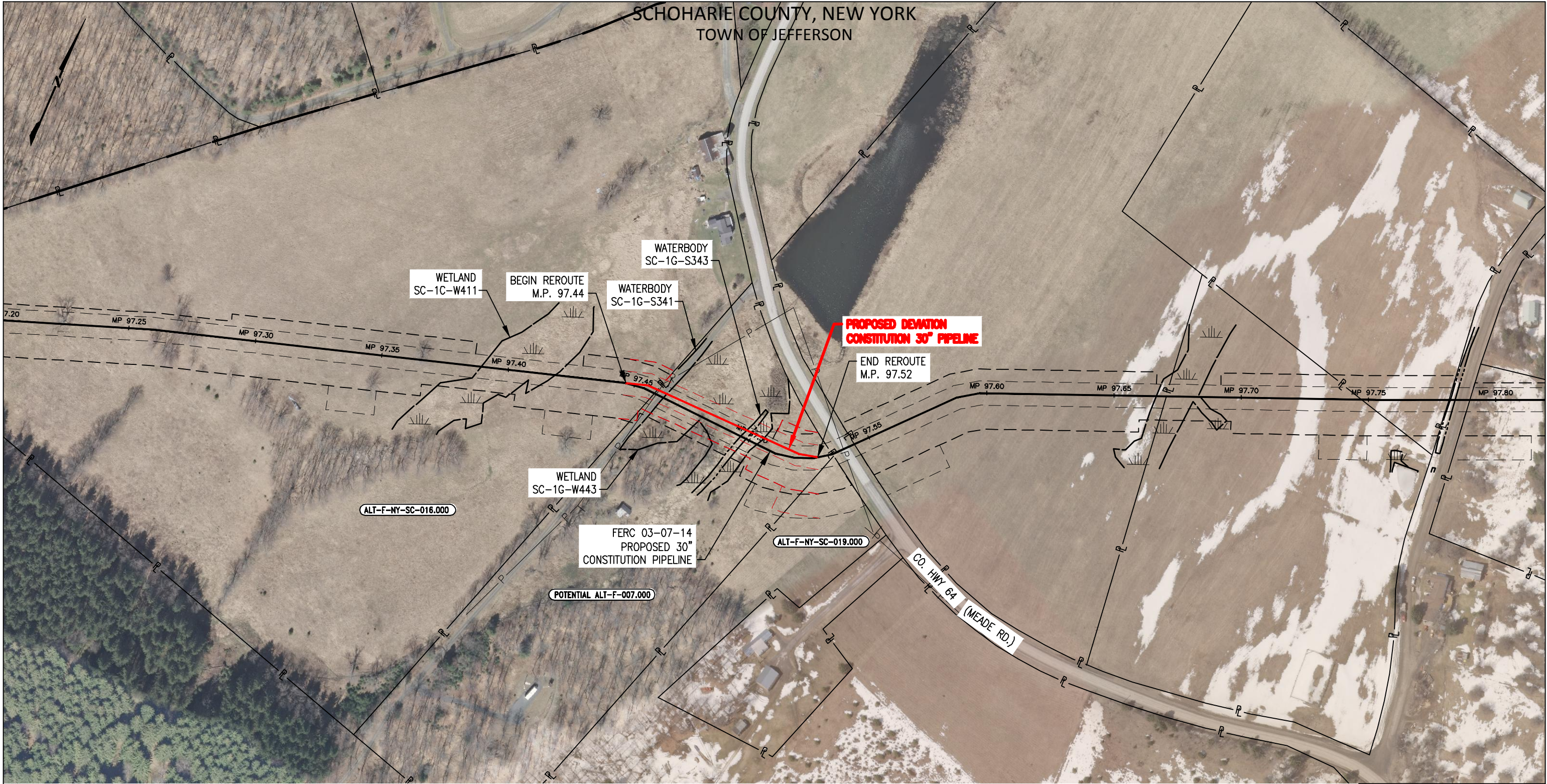
CONSTITUTION PIPELINE COMPANY, LLC.
ROUTE DEVIATION PLAN
RE-ROUTE TRACKING NUMBER TRK#494.0

TOWN OF SUMMIT
SHOHARIE COUNTY, NEW YORK



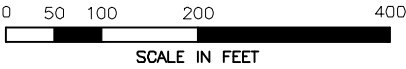
CONSTITUTION PIPELINE

DRAWN BY: GIE	DATE: 06/02/14	ISSUED FOR BID:	SCALE: 1"= 200'
CHECKED BY: GIE	DATE: 06/02/14	ISSUED FOR CONSTRUCTION:	
APPROVED BY:	DATE:	DRAWING NUMBER: 26-03-70/097.1	SHEET 1
WO: 1110415			OF 1



LEGEND


- — — — — FERC 03-07-14 PROPOSED 30" CONSTITUTION PIPELINE
- - - - - FERC 03-07-14 EDGE OF WORK CORRIDOR
- — — — — PROPOSED DEVIATION CONSTITUTION 30" PIPELINE
- - - - - PROPOSED WORKSPACE DEVIATION/EDGE OF WORK CORRIDOR
- P — — — — — PROPERTY LINE
- P — — — — — POWER LINE
- || — — — — — FOREIGN PIPELINE




DRAWING NO.				REFERENCE TITLE			
26-03-70/0099				ALIGNMENT SHEET SHT 099 OF 126			
NO.	DATE	BY	REVISION DESCRIPTION	W.O. NO.	CHK.	APP.	
1	06/02/14	GIE	ISSUED FOR REVIEW	1110415	GIE	BD	

CONSTITUTION PIPELINE COMPANY, LLC.
ROUTE DEVIATION PLAN
RE-ROUTE TRACKING NUMBER TRK#461.0

TOWN OF JEFFERSON
SCHOHARIE COUNTY, NEW YORK



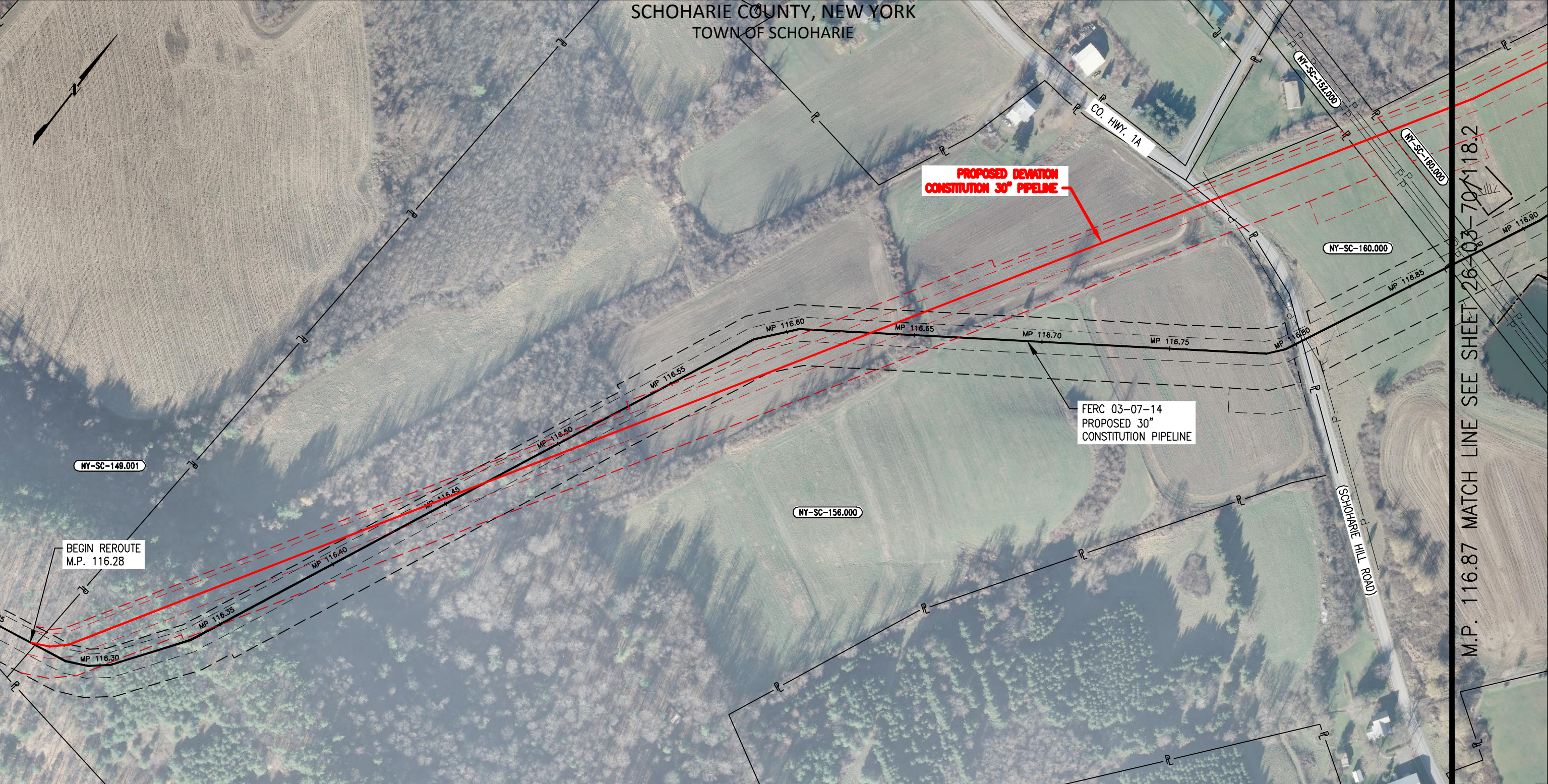
GULF INTERSTATE
ENGINEERING
HOUSTON, TEXAS



CONSTITUTION PIPELINE

DRAWN BY: GIE	DATE: 06/02/14	ISSUED FOR BID:	SCALE: 1"= 200'
CHECKED BY: GIE	DATE: 06/02/14	ISSUED FOR CONSTRUCTION:	
APPROVED BY:	DATE:	DRAWING NUMBER: 26-03-70/099.1	SHEET 1
WO: 1110415			OF 1

SCHOHARIE COUNTY, NEW YORK
TOWN OF SCHOHARIE



PROPOSED DEVIATION
CONSTITUTION 30" PIPELINE

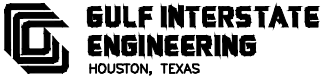
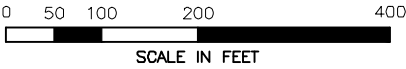
FERC 03-07-14
PROPOSED 30"
CONSTITUTION PIPELINE

BEGIN REROUTE
M.P. 116.28

M.P. 116.87 MATCH LINE SEE SHEET 26-03-70/118.2

LEGEND

- FERC 03-07-14 PROPOSED 30" CONSTITUTION PIPELINE
- - - FERC 03-07-14 EDGE OF WORK CORRIDOR
- PROPOSED DEVIATION CONSTITUTION 30" PIPELINE
- - - PROPOSED WORKSPACE DEVIATION/EDGE OF WORK CORRIDOR
- P — PROPERTY LINE
- P — POWER LINE
- || — FOREIGN PIPELINE

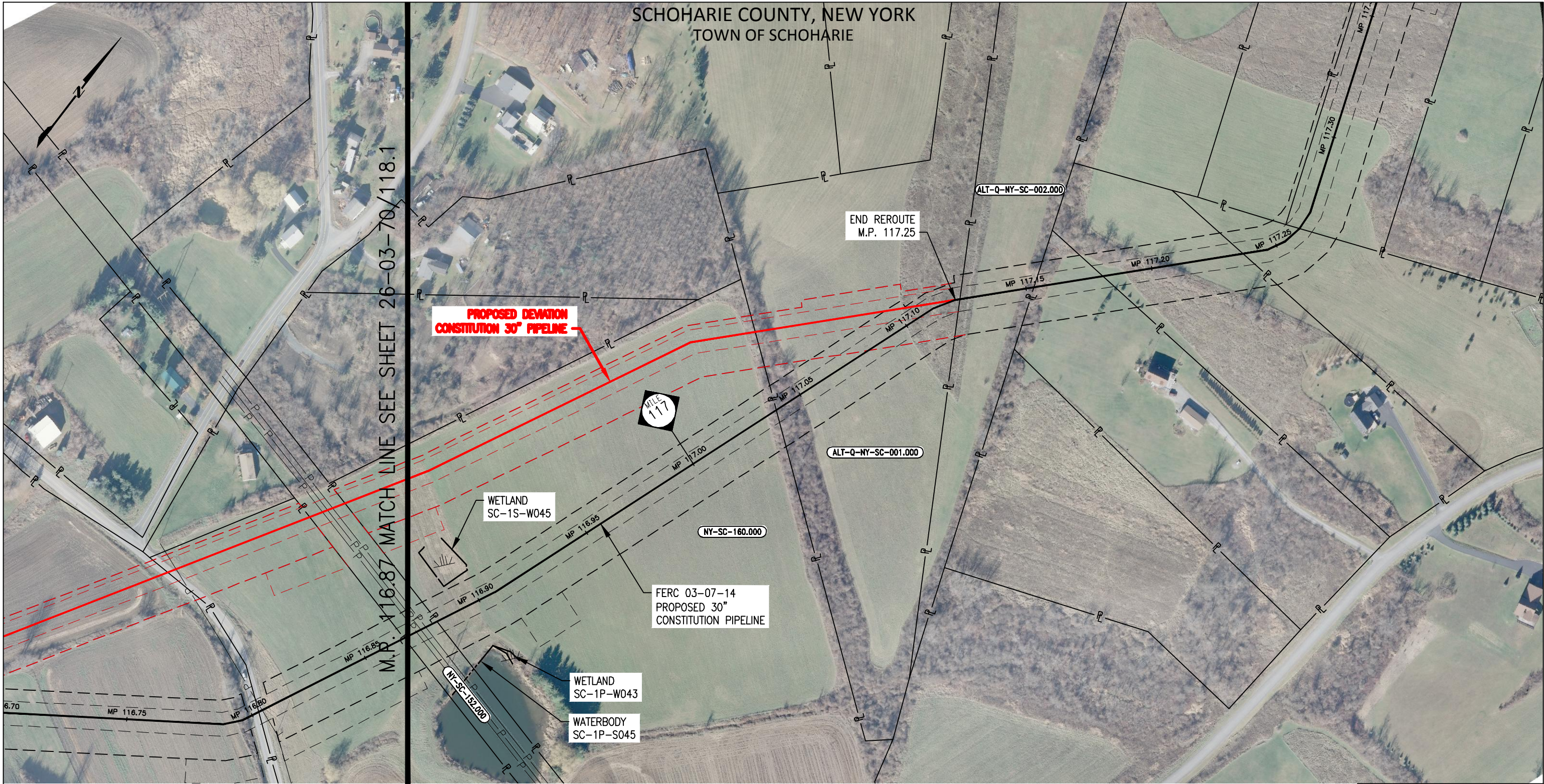


CONSTITUTION PIPELINE COMPANY, LLC.
ROUTE DEVIATION PLAN
RE-ROUTE TRACKING NUMBER TRK#453.0



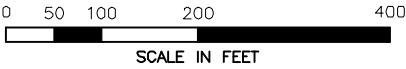
TOWN OF SCHOHARIE
SCHOHARIE COUNTY, NEW YORK

DRAWING NO.				REFERENCE TITLE			
26-03-70/0118				ALIGNMENT SHEET SHT 118 OF 126			
NO.	DATE	BY	REVISION DESCRIPTION	W.O. NO.	CHK.	APP.	
1	06/02/14	GIE	ISSUED FOR REVIEW	1110415	GIE	BD	
DRAWN BY: GIE		DATE: 06/02/14		ISSUED FOR BID:		SCALE: 1"= 200'	
CHECKED BY: GIE		DATE: 06/02/14		ISSUED FOR CONSTRUCTION:			
APPROVED BY:		DATE:		DRAWING NUMBER: 26-03-70/118.1		SHEET 1	
WO: 1110415						OF 2	



LEGEND

- FERC 03-07-14 PROPOSED 30" CONSTITUTION PIPELINE
- - - FERC 03-07-14 EDGE OF WORK CORRIDOR
- PROPOSED DEVIATION CONSTITUTION 30" PIPELINE
- - - PROPOSED WORKSPACE DEVIATION/EDGE OF WORK CORRIDOR
- P — PROPERTY LINE
- P — POWER LINE
- || — FOREIGN PIPELINE



DRAWING NO.		REFERENCE TITLE					
26-03-70/0119		ALIGNMENT SHEET SHT 119 OF 126					
NO.	DATE	BY	REVISION DESCRIPTION	W.O. NO.	CHK.	APP.	
1	06/02/14	GIE	ISSUED FOR REVIEW	1110415	GIE	BD	

CONSTITUTION PIPELINE COMPANY, LLC.
ROUTE DEVIATION PLAN
RE-ROUTE TRACKING NUMBER TRK#453.0

TOWN OF SCHOHARIE
SCHOHARIE COUNTY, NEW YORK

GULF INTERSTATE
ENGINEERING
HOUSTON, TEXAS

CONSTITUTION PIPELINE

DRAWN BY: GIE	DATE: 06/02/14	ISSUED FOR BID:	SCALE: 1"= 200'
CHECKED BY: GIE	DATE: 06/02/14	ISSUED FOR CONSTRUCTION:	
APPROVED BY:	DATE:	DRAWING NUMBER: 26-03-70/118.2	SHEET 2
WO: 1110415			OF 2

SCHOHARIE COUNTY, NEW YORK
TOWN OF SCHOHARIE

PROPOSED DEVIATION
CONSTITUTION 30" PIPELINE

FERC 03-07-14
PROPOSED 30"
CONSTITUTION PIPELINE

WETLAND
SC-1A-W292D

WETLAND
SC-1Q-W382

ALT-Q-NY-SC-021.001

WETLAND
SC-1Q-W379

MP 120.00

WETLAND
SC-1A-W382B

WETLAND
SC-1A-W382A

WETLAND
SC-1A-W292A

WETLAND
SC-1C-W457

END REROUTE
M.P. 120.41

ALT-Q-NY-SC-022.000

WETLAND
SC-1A-W292K

WATERBODY
SC-1A-S366

WETLAND
SC-1Q-W380

WATERBODY
SC-1Q-S291

WETLAND
SC-1C-W454

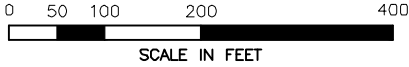
ALT-Q-NY-SC-021.002

ALT-Q-NY-SC-017.001

BEGIN REROUTE
M.P. 119.93

LEGEND

- FERC 03-07-14 PROPOSED 30" CONSTITUTION PIPELINE
- FERC 03-07-14 EDGE OF WORK CORRIDOR
- PROPOSED DEVIATION CONSTITUTION 30" PIPELINE
- PROPOSED WORKSPACE DEVIATION/EDGE OF WORK CORRIDOR
- PROPERTY LINE
- P ----- POWER LINE
- FOREIGN PIPELINE



CONSTITUTION PIPELINE COMPANY, LLC.
ROUTE DEVIATION PLAN
RE-ROUTE TRACKING NUMBER TRK#500.0

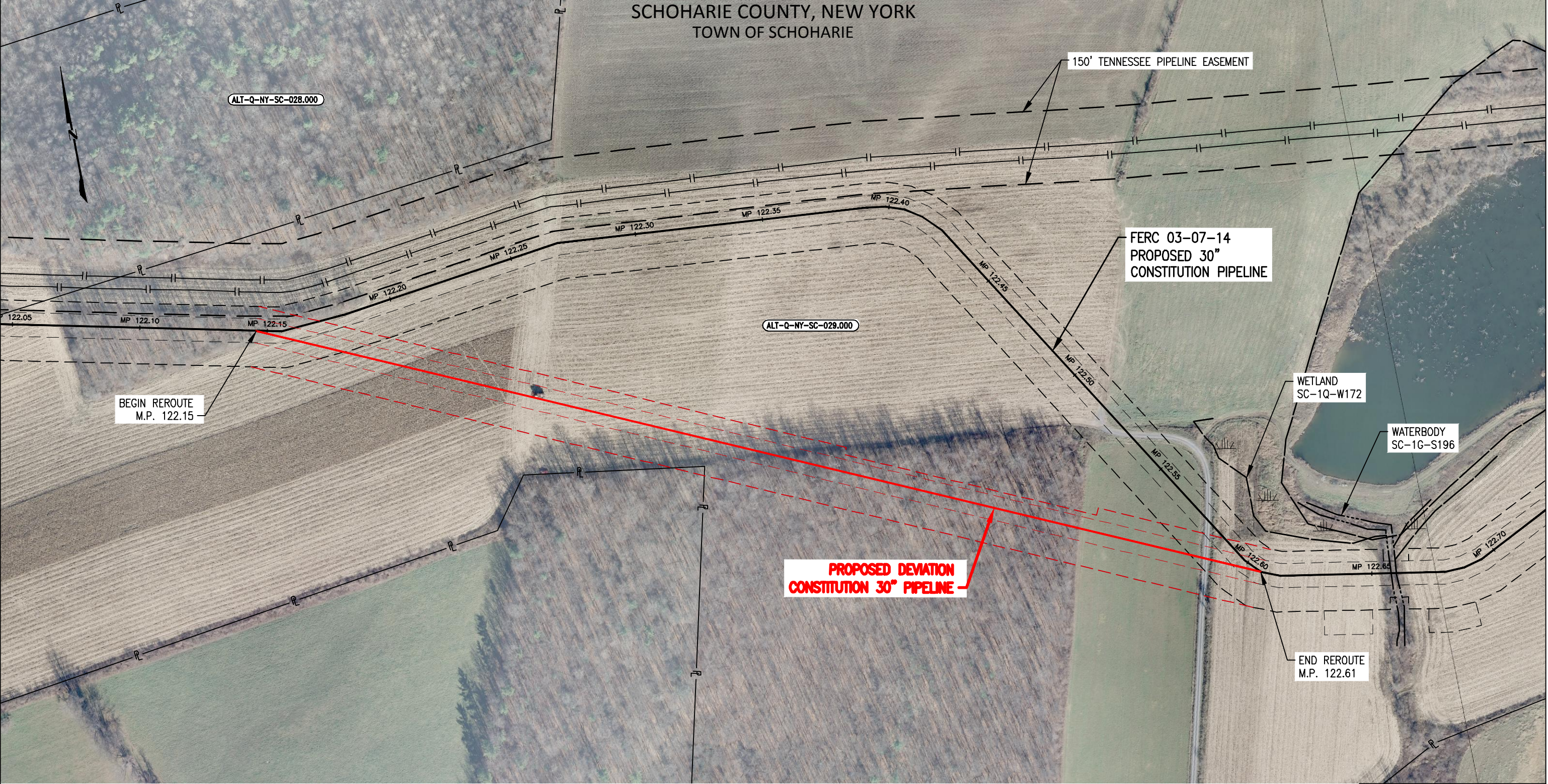


TOWN OF SCHOHARIE
SCHOHARIE COUNTY, NEW YORK

DRAWING NO.		REFERENCE TITLE					
26-03-70/0122		ALIGNMENT SHEET SHT 122 OF 126					
NO.	DATE	BY	REVISION DESCRIPTION	W.O. NO.	CHK.	APP.	
1	06/02/14	GIE	ISSUED FOR REVIEW	1110415	GIE	BD	

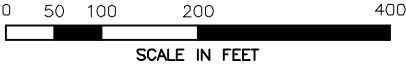
DRAWN BY: GIE	DATE: 06/02/14	ISSUED FOR BID:	SCALE: 1"= 200'
CHECKED BY: GIE	DATE: 06/02/14	ISSUED FOR CONSTRUCTION:	
APPROVED BY:	DATE:	DRAWING NUMBER: 26-03-70/122.1	SHEET 1 OF 1
WO: 1110415			

SCHOHARIE COUNTY, NEW YORK
TOWN OF SCHOHARIE



LEGEND

- — — FERC 03-07-14 PROPOSED 30" CONSTITUTION PIPELINE
- - - - FERC 03-07-14 EDGE OF WORK CORRIDOR
- — — PROPOSED DEVIATION CONSTITUTION 30" PIPELINE
- - - - PROPOSED WORKSPACE DEVIATION/EDGE OF WORK CORRIDOR
- P — PROPERTY LINE
- P — POWER LINE
- || — FOREIGN PIPELINE



CONSTITUTION PIPELINE COMPANY, LLC.
ROUTE DEVIATION PLAN
RE-ROUTE TRACKING NUMBER TRK#492.0



TOWN OF SCHOHARIE
SCHOHARIE COUNTY, NEW YORK

DRAWING NO.				REFERENCE TITLE			
26-03-70/0124				ALIGNMENT SHEET SHT 124 OF 126			
NO.	DATE	BY	REVISION DESCRIPTION	W.O. NO.	CHK.	APP.	
1	06/02/14	GIE	ISSUED FOR REVIEW	1110415	GIE	BD	
DRAWN BY: GIE		DATE: 06/02/14		ISSUED FOR BID:		SCALE: 1"= 200'	
CHECKED BY: GIE		DATE: 06/02/14		ISSUED FOR CONSTRUCTION:			
APPROVED BY:		DATE:		DRAWING NUMBER: 26-03-70/124.1		SHEET 1	
WO: 1110415						OF 1	